



AVAIL[®]

**BALLISTIC
DOOR PANELS**

NIJ LEVEL IIIA



INSTALLATION GUIDE

As shown on

**FORD[®] MUSTANG GT
FRONT DOORS**
(2015 & newer models)



angelarmor.com

970 235 2961

sales@angelarmor.com

TABLE OF CONTENTS



INTRODUCTION	3
Product Description	3
Installation Overview	3
Warnings & Cautions	4
Legal Statements	4
 TOOLS & PARTS LIST	 5
Recommended Tools	5
Installation Kit Contents	5
 INSTALLATION	 6
Overview	6
– General	6
– Important Notes	6
Procedure	7
– Removing Internal Components	7
– Removing Front Window Guide Triangle	8
– Removing Interior Window Trim	9
– Removing Exterior Window Trim	9
– Replacing Window Regulator Bolt	10
– Installing Ballistic Door Panel	10
– Reassembling Door	11
– Completing Installation	11
 REMOVAL OR DECOMMISSION	 12

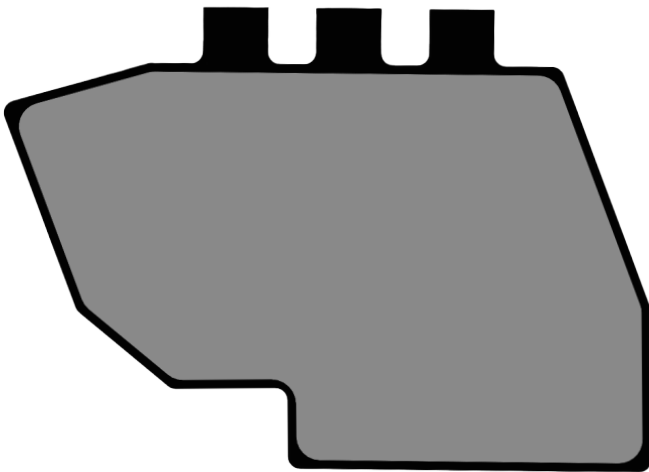
© 2025 ANGEL ARMOR, LLC. ALL RIGHTS RESERVED. PRINTED IN THE U.S.A.

FORD® IS A REGISTERED TRADEMARK OF FORD MOTOR CORPORATION.

INTRODUCTION

Congratulations on your purchase of the Angel Armor® Avail® Ballistic Door Panel (Level IIIA) for the Ford® Mustang GT! It's our honor to provide advanced protection to those who put their life on the line in the name of law and order.

In just a matter of minutes, your vehicle will be upfitted with the finest ballistic technology available. With innovative ballistic materials, advanced designs and the fastest installation in the industry, Angel Armor Avail Ballistic Door Panels elevate protective technology to a higher level.



▲ Figure 1. Angel Armor Avail Ballistic Door Panel (Level IIIA) for the Ford Mustang GT

Product Description

Angel Armor Avail Ballistic Door Panels (Level IIIA) are constructed of a proprietary technology that is not only remarkably strong, but also thin, lightweight and weatherproof. These properties, plus semi-rigid material characteristics, enable unprecedented ease of installation while providing protection independently tested in accordance with NIJ Standard 0108.01 protocol. Angel Armor Avail Ballistic Door Panels (Level IIIA) for the Ford Mustang GT exceed NIJ Standard 0108.01 protocol for multi-round protection and offer a five-year express limited warranty. Within this period, the panels may be removed and transferred to another vehicle of the same make and model without violating the warranty.

Installation Overview

Angel Armor Avail Ballistic Door Panels (Level IIIA) for the Ford Mustang GT require no additional brackets or fasteners. The Ballistic Door Panel is inserted into the door, adjacent to the window glass.

Installation into Ford Mustang GT takes as little as 15 minutes for experienced installers. The average user installation takes only 25 to 30 minutes.



Watch an installation in action at angelarmor.com

Warnings and Cautions

Please adhere to the following guidelines to prevent personal injury, equipment damage and unnecessary difficulty during installation.

Legal Statements

See supplied Warranty and Terms and Conditions for important legal information. These instructions are provided for your convenience only, and Angel Armor expressly disclaims any liability for any damage to personal property or personal injury that occurs as a result of either installation or removal of panels.

Warnings and Cautions

Please adhere to the following guidelines to prevent personal injury, equipment damage and unnecessary difficulty during installation.



DISCONNECT THE VEHICLE BATTERY AFTER THE WINDOW IS ADJUSTED FOR INSTALLATION TO AVOID ACCIDENTAL AIRBAG DEPLOYMENT. ACCIDENTAL DEPLOYMENT OF THE AIRBAG MAY CAUSE SERIOUS PERSONAL INJURY.



Read this guide in its entirety before beginning installation.



Wear appropriate protective gear, including eye and foot protection.



Avoid puncturing speakers with screws, push-snaps, fasteners, or other sharp pieces during door disassembly, panel insertion, and door re-assembly.



Do not drop screws or other assembly components inside the door, as they may be difficult to retrieve. If possible, use magnetic tools during installation.



Use only plastic trim removal/prying tools on finished surfaces to help prevent scratching.



Avoid tearing the weatherproof cover on the “teeth” inside of the door when removing the ballistic panel by pushing the panel toward the interior of the door before lifting it out of the door



Discard and replace any door components that are inadvertently damaged during the installation process. Proper installation according to the instructions in this guide should not cause damage to any vehicle or Ballistic Door Panel parts or components.



Use caution when removing parts that may have sharp edges, such as the outer window weatherstrip.

TOOLS & PARTS LIST

This section lists the tools recommended for installation and the parts included in the installation kit.

Recommended Tools

This section lists tools to be supplied by the installer.

- Panel pry tools
- Ratchet wrench
- Pliers
- 7mm socket
- 8mm socket
- 10mm socket
- T-30 socket/bit
- Ratchet extension
- Gloves



▲ Figure 2. Panel/trim removal tool



▲ Figure 3. Ratchet wrench



▲ Figure 4. 7 mm socket



▲ Figure 5. 8 mm socket



▲ Figure 6. 10mm socket



▲ Figure 7. T30 socket bit

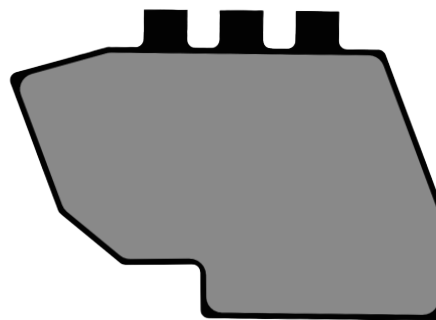


▲ Figure 8. Long nose pliers

Installation Kit Contents

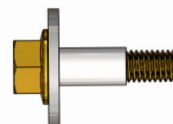
This section lists the Ballistic Door Panel type and all parts included with it.

- Angel Armor Avail Ballistic Door Panel (Level IIIA) for Ford Mustang GT (2015 & newer models)



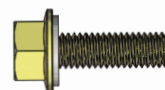
▲ Figure 9. Angel Armor Avail Ballistic Door Panel (Level IIIA) for the Ford Mustang GT

- M6x1 25mm bolt with washer and guard



▲ Figure 10. One 25mm bolt M6x1 with washer and guard

- M6x1 20mm bolt with washer



▲ Figure 11. One 20mm bolt M6x1 with washer

- Angel Armor brand label



▲ Figure 12. Angel Armor brand label

- Isopropyl alcohol wipe



▲ Figure 13. Isopropyl alcohol wipe

INSTALLATION

This section provides instructions for installing Angel Armor Avail Ballistic Door Panels (Level IIIA) into the Ford Mustang GT Vehicle (2015 & newer models).

Overview

Installation of Angel Armor Avail Ballistic Door Panels (Level IIIA) into the Ford Mustang GT is accomplished quickly and easily. See procedure on page 7 for detailed instructions.

General Installation Procedure

- 1** Remove required vehicle trim.
- 2** Insert and secure Angel Armor Ballistic Door Panel.
- 3** Re-assemble door.

Important Notes

- The directions, photographs and illustrations in this guide depict an installation performed on the driver's side. The same installation procedure applies to the passenger door. NOTE: The anti-abrasion panel faces the interior of the vehicle for both the driver-side and passenger-side Ballistic Door Panels.
- Note the location of screws and door components before disassembling to aid proper re-assembly after panel installation.
- Place all removed hardware and components in a safe place during installation.
- Angel Armor Avail Ballistic Door Panels are semi-rigid, which allows them to be bent slightly for easy installation. To help prevent damage to the Ballistic Door Panels, do not bend them tighter than a 6" radius (12" diameter).
- Firm pressure may be needed to clear minor obstructions during insertion of the ballistic panels, but never use excessive force. Excessive force may damage internal door components.
- Bypass obstructions inside the door, such as crash bars or window attachment brackets, by angling the panel during insertion or by removing and re-inserting the ballistic panel, as described in Inserting the Ballistic Door Panel, on page 10.

PROCEDURE

Complete the following steps to properly install Angel Armor Avail Ballistic Door Panels (Level IIIA) for Ford Mustang GT.

Preparing the Door Interior

- 1** Turn on the vehicle in accessory mode (acc) and fully lower the window.
- 2** Remove the interior handle cover from the interior door trim. Work the trim panel from the front edge to the back.

NOTE: The rear edge of the panel has fixed clips that will break if pulling from the rear edge.



▲ Figure 14. Fixed clips

- 3** With the 10mm socket, remove the bolt shown in the following image.



▲ Figure 15. Location of handle bolt

- 4** Remove the door control by lifting it from the handle edge, carefully working it towards the front.

NOTE: Take care with the handle section, as it can be easily broken.



▲ Figure 16. Removing door control from handle edge

- 5** Remove the wire harness to the door controls and set controls aside for future use.
- 6** With the 10mm socket, remove the bolt in the interior door handle pocket.



▲ Figure 17. Location of second bolt

- 7** Remove the two 7mm screws at the bottom of the door.



▲ Figure 18. Locations of 7mm screws

- 8** Remove the panel from the door and pull from the lower section of the panel.
- 9** Disconnect the door handle cable and the two wiring harnesses.



▲ Figure 19. Door handle cable and wiring harnesses

- 10** Remove the vapor barrier from the lower section of the door. Set this aside in the area to prevent debris from sticking to the rubber adhesive.



▲ Figure 20. Lower door section

Removing Front Window Guide Triangle

- 1** Remove the round and oval cover stickers from the front edge of the door.
- 2** Remove the two 8mm bolts located behind the stickers.
- 3** Remove the T30 bolt from the edge.



▲ Figure 21. T30 bolt from edge

- 4** Remove the plastic rivets from the rubber seal around the window triangle.



▲ Figure 22. Plastic rivets on window triangle rubber seal

- 5** Remove the window triangle. This may require back and forth movement to remove from the chanel.



▲ Figure 23. Removing the window triangle

Removing Interior Window Trim

- 1** Pull the rubber window seal on the interior side, starting from the front edge and working back.

- 2** Remove the plastic rivet to fully remove the interior window seal.



▲ Figure 24. Removing interior window seal

Removing Exterior Window Trim

- 1** Remove the front edge of the plastic rivet from the exterior window trim (marked with blue line in our picture below).



▲ Figure 25. Removing the front edge of plastic rivet from exterior window trim

- 2** Working from the front to the back, pull the trim towards the vehicle interior.

NOTE: For models 2024 and newer, there is a hidden plastic rivet inside the window cavity. Remove this. For models 2015 - 2023, remove the T-15 screw from the same location as the plastic rivet in figure 26.



▲ Figure 26. Hidden plastic rivet

Replacing Window Regulator Bolt

- 1** Connect the window controls to control the wire harness.
- 2** Manipulate the window until the window bolts are easily accessible.
- 3** Replace rear bolt with the provided bolt with plastic sheath, torquing this bolt to the OEM specifications.

IMPORTANT: Do not remove plastic from the bolts shoulder.

- 4** Replace front bolt with provided smaller M6x1 - 20mm bolt, and smaller washer.

Installing Ballistic Door Panel

- 1** Position the window halfway up to gain access to the lower crash bar.
- 2** Slide the armor into the door cavity between the exterior sheet metal and window.

NOTE: The armor will catch on the lower crash bar.

- 3** Using your hands, assist the door panel past the lower crash bar.
- 4** Once the armor is inside the vehicle door, slide the armor to the rear of the door. Manipulation of the window can help with panel positioning.
- 5** Ensure that the armor is properly in place. Armor is considered in place if:
 - A** Rear of the armor is behind the rear window track.



▲ Figure 27. Rear of armor behind rear window track

- B** Armor cut out is sitting 1-1.5" inches from the window regulator.



▲ Figure 28. Space between armor and window regulator

- C Armor should sit below the upper body panel reinforcement structure.
- D Nylon tabs are between the exterior window trim tabs.
- D Apply the brand label to the door, pressing for at least 30 seconds to ensure proper adhesion.

NOTES:

When working the ballistic panel rearward, never use excessive force, which may damage internal door components or puncture the ballistic door panel's weatherproof covering. It may be useful to shimmy the ballistic panel side to side while pushing forward to move it into position.

Verify that the ballistic panel is properly positioned by following steps 5A-D in panel installation section.

If the ballistic door panel is not properly positioned, repeat the steps in this section.



▲ Figure 29. Angel Armor brand label

Reassembling Door

- 1 After confirming that the ballistic panel is secured and in its final placement, reassemble the panels and trims in reverse order of removal.

Completing Installation


- 1 Attach the Angel Armor brand label to the interior door panel by completing the following procedure:
 - A Clean the attachment location on the door with isopropyl alcohol.
 - B Allow the door surface to dry completely.
 - C Remove backing from the brand label.

INSTALLATION COMPLETE:

Your vehicle is now equipped with advanced ballistic protection from Angel Armor.

REMOVAL OR DECOMMISSION

This section describes the process for removing the Ballistic Door Panel for decommission or transfer to another vehicle.


- 1** Roll the door window down completely.
- 2**  **Disconnect the vehicle battery to avoid accidental airbag deployment.**
- 3** Follow the steps in reverse order described in:

Preparing the door interior (pg. 7)

Removing window guide triangle (pg. 8)

Removing interior and exterior window trim (pg. 9)

- 4** Grip the nylon folds at the top edge of the Ballistic Door Panel.
- 5** Slide the Ballistic Door Panel toward the front of the vehicle, and then up to remove it from the door. Be sure to align the Ballistic Door Panel with the vertical window opening for easier removal.

 Avoid tearing the Ballistic Door Panel's weatherproof cover by pushing the panel toward the interior of the vehicle before lifting it out of the door.
- 6** If removing the Ballistic Door Panel for transfer to another vehicle, inspect the panel after removal. Contact Angel Armor with any concerns about wear or damage.